

10 μ m

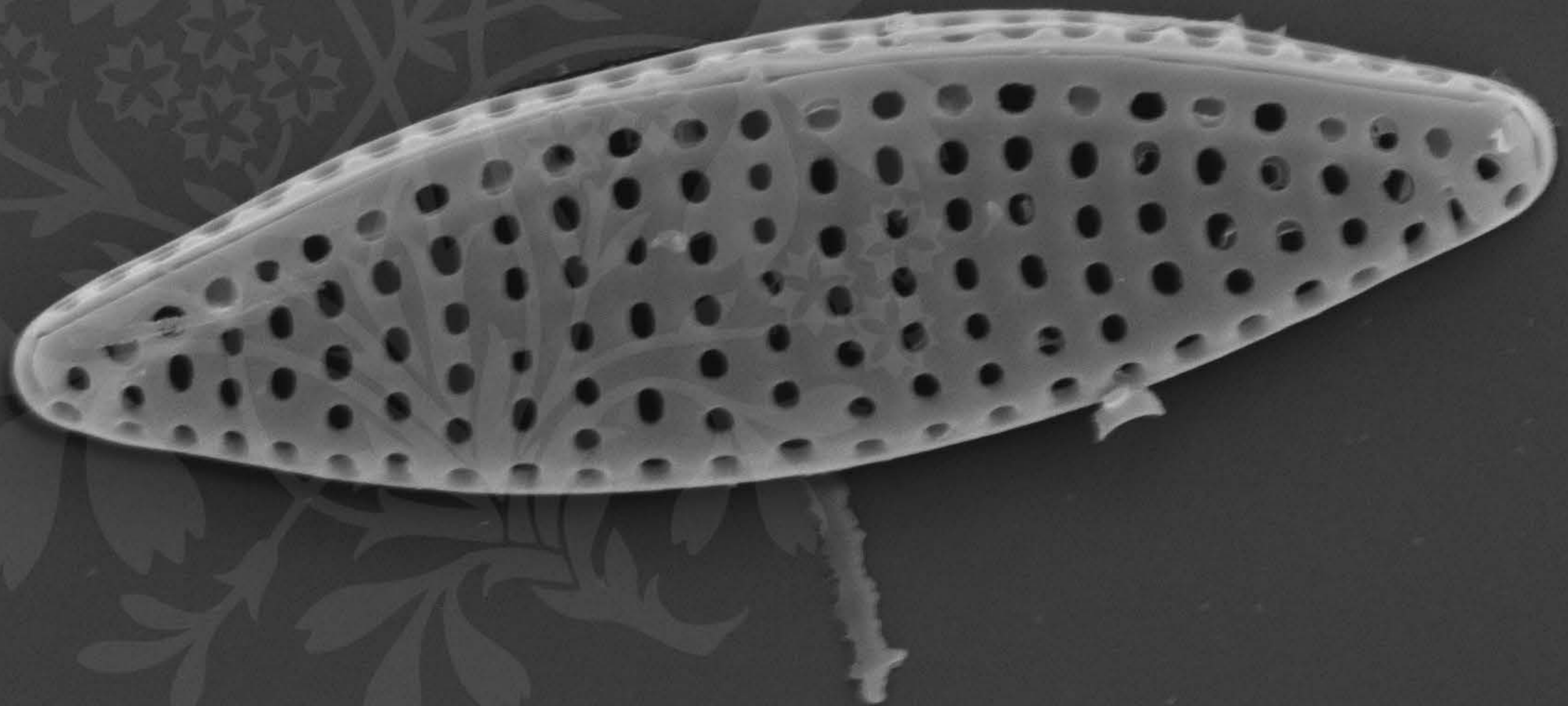
Mag = 6.16 K X

EHT = 5.00 kV Signal A = InLens Date :10 Aug 2011

WD = 4 mm

File Name = 078-DM1005 pae.tif





1 μ m

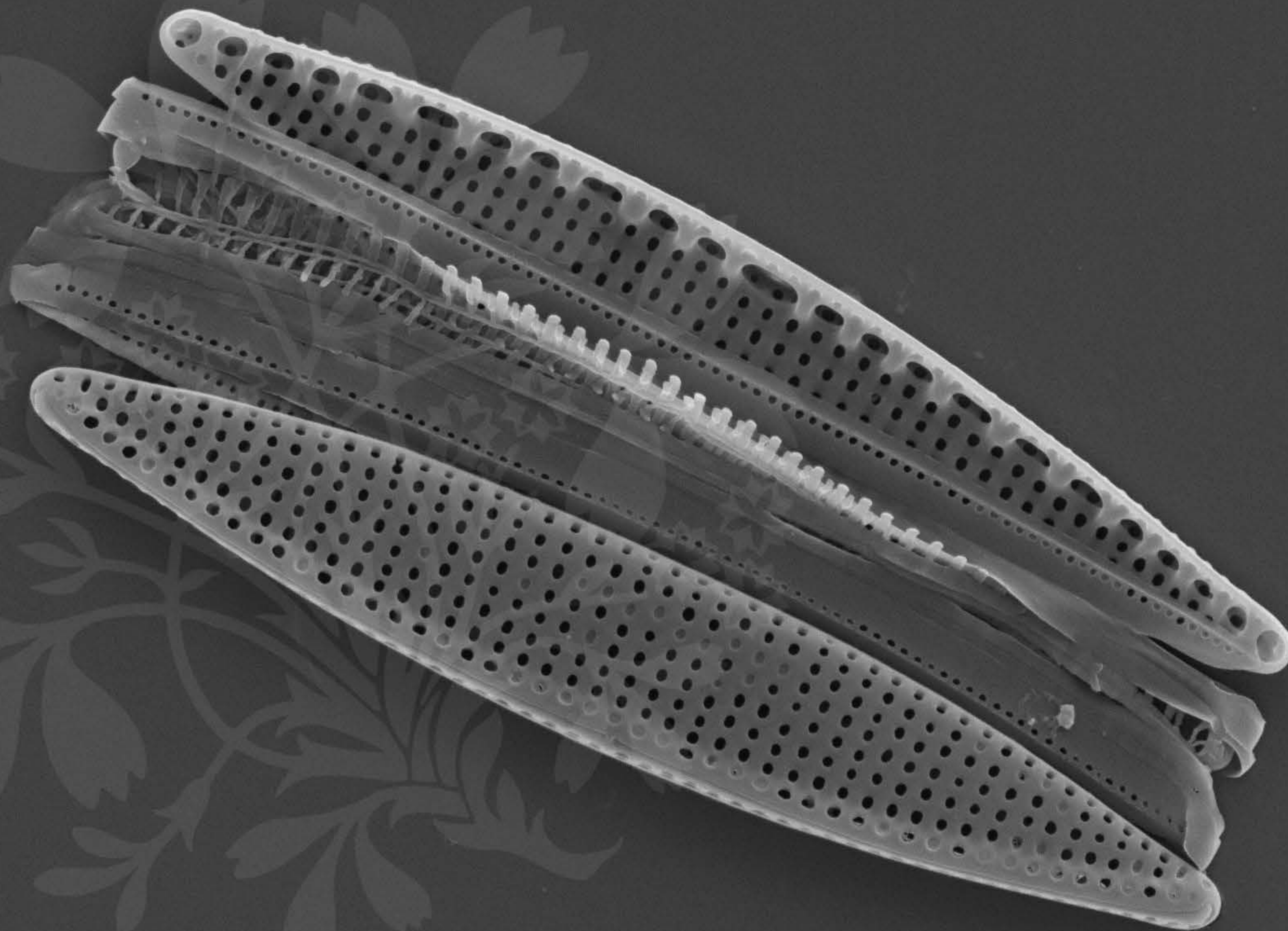
Mag = 35.72 K X

WD = 4 mm

EHT = 5.00 kV Signal A = InLens Date :10 Aug 2011

File Name = 079-DM1005 parent cell.tif





2 μ m



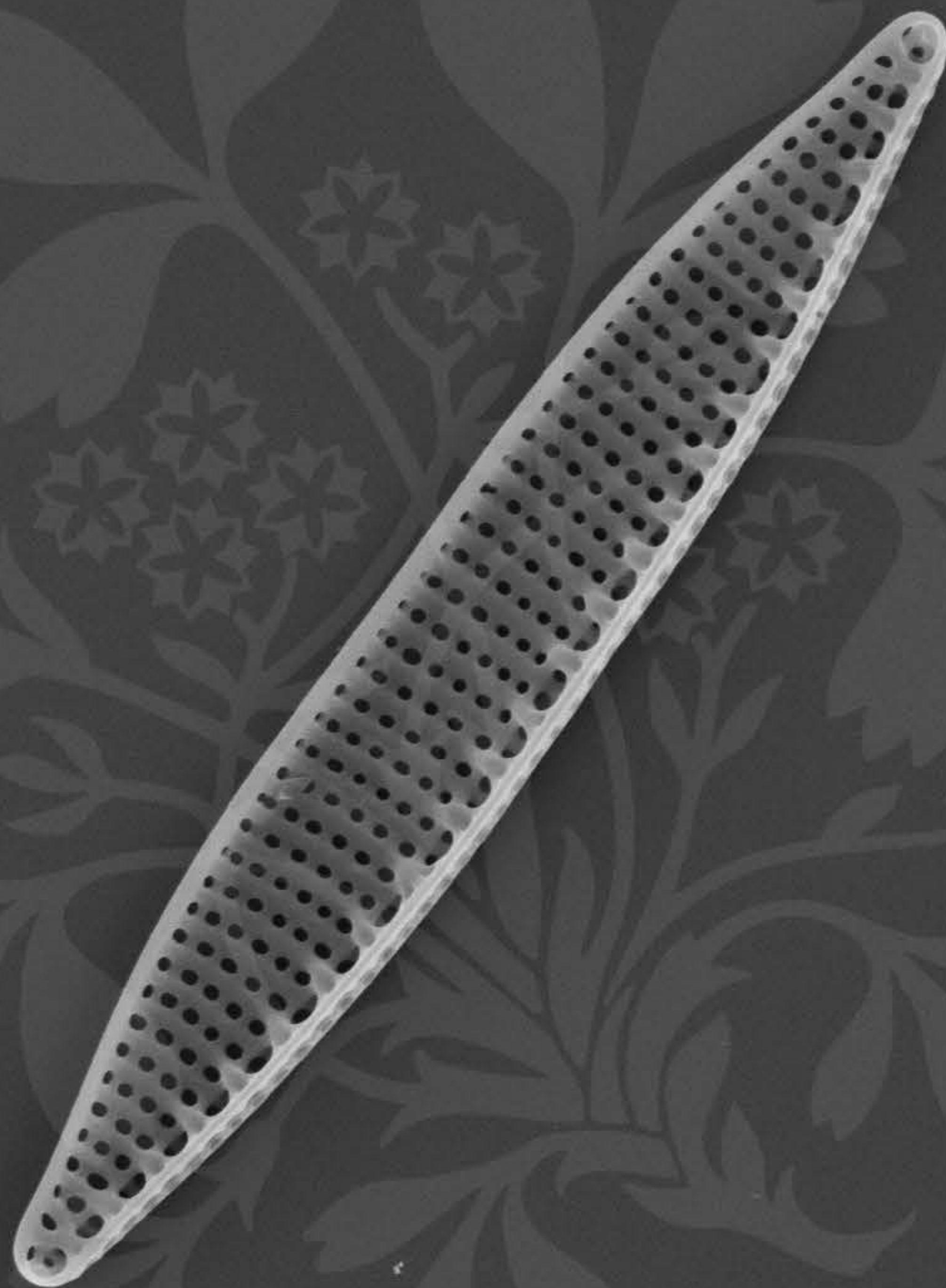
Mag = 15.87 K X

WD = 4 mm

EHT = 5.00 kV Signal A = InLens Date :10 Aug 2011

File Name = 081-DM1005 initial cell.tif





2 μ m



Mag = 12.76 K X

WD = 4 mm

EHT = 5.00 kV Signal A = InLens Date :10 Aug 2011

File Name = 080-DM1005 initial cell.tif

